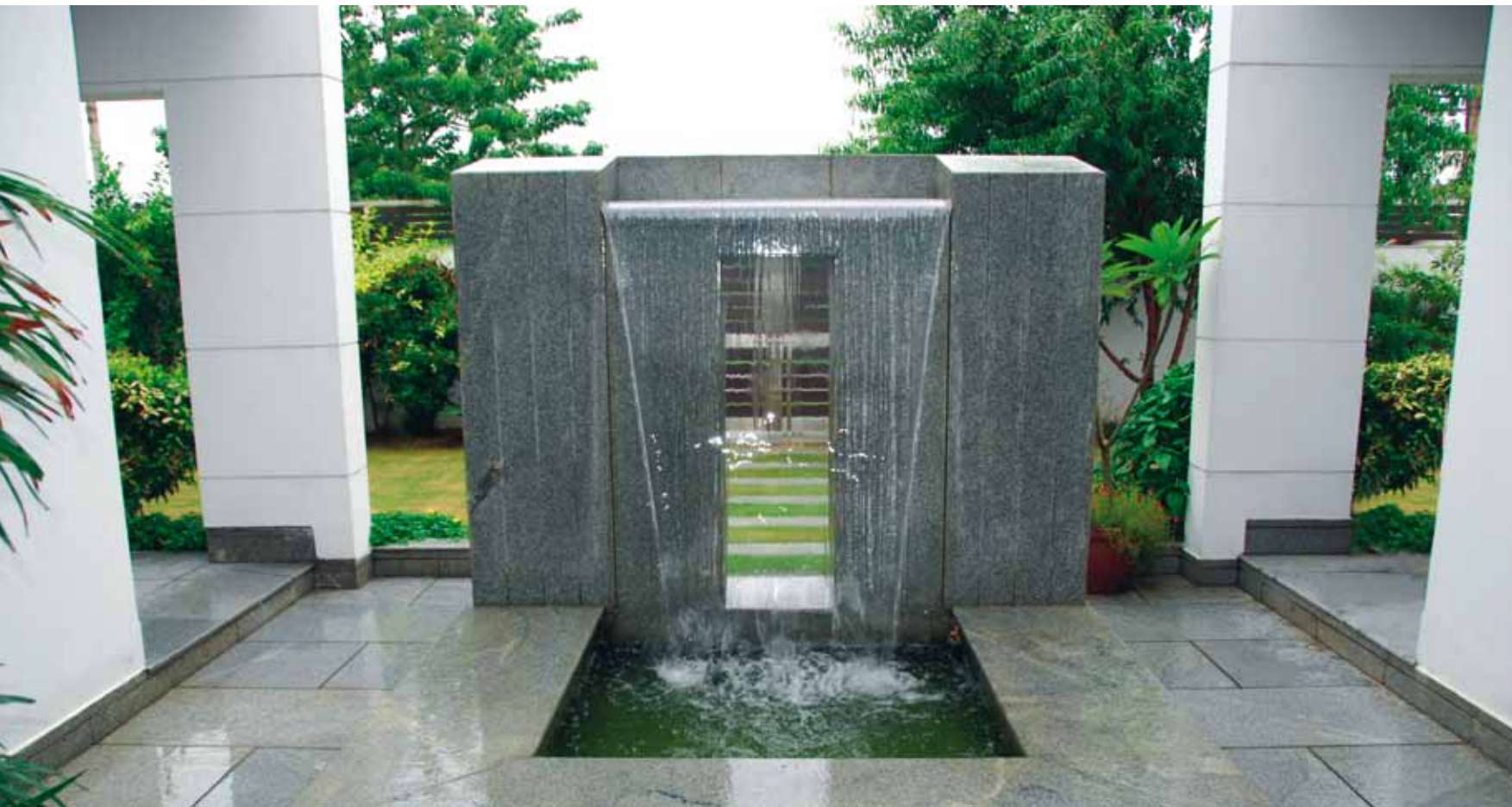


Daljit Singh

HOUSE 11 (DELHI)

08

A very concise architectural vocabulary has been used in the design of this home for a nuclear family in the suburbs of Delhi. The influences of the early modern movement are obvious in the forms selected to sculpt the house. A stark white reduces the mass of the building and fights the heat.





modern form

This house is early modernist and wrapped around an enclosed garden with two entrance courts. The regular court connects it with the driveway and opens into a foyer with stairs leading to the private living quarters. Entry for guests is via a second pedestrian court; a monolithic water body greets them and directs them towards other areas.

There are two entertainment areas; one formal, the other informal. They, and the dining room, open out onto wide verandahs and the garden. The private quarters on the upper floor are shielded. The children's rooms are mirror images. The second floor has a home theatre, a temple and terraces.

The façade of the house is organized around two vertical planes that screen noise and provide a monolithic backdrop for the living spaces. The symmetry of the elevation has been broken by articulating the two wings separately; one in a masculine form and the other feminine.



Top-left: Large walls are detailed to break their monotony.

Top-right: Corridors have large glazed sides to provide light and change volume perception.

Facing page top: The dining room opens out onto the wrap around garden on two sides.

Facing page bottom: The master bedroom has a separate breakfast area and opens onto a terrace.

Previous page left: Informal entertaining sunken lounge with a visual connection to the dining room.

Previous page right: Wall panels are converted into displays for the large collection of the couples many art objects.

PRINCIPAL ARCHITECT

Daljit Singh

EDUCATION

B. Arch

DESIGN TEAM

Mandavi Singh, Aditi Saigal

BUILT-UP AREA

10175 sft

FIRM NAME

Absolute Architecture

TEAM SIZE

8 people

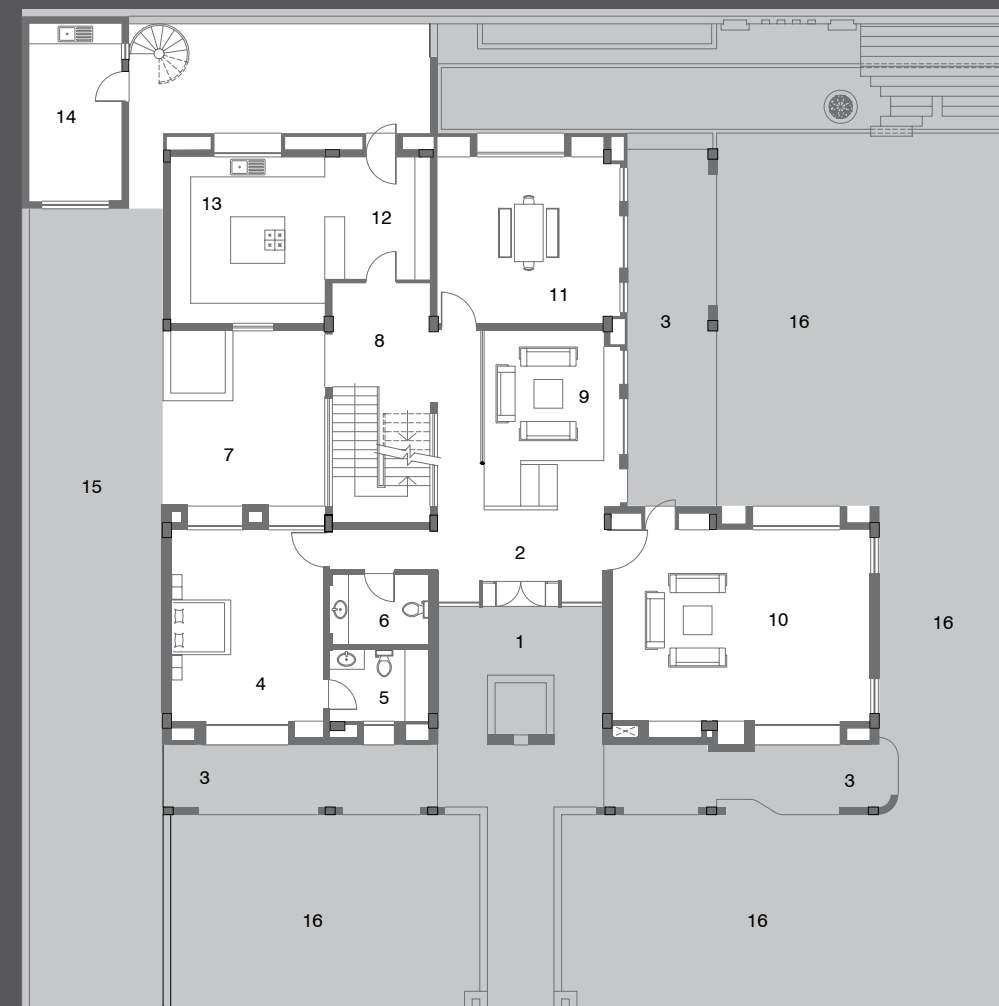
ADDRESS

C-110, Sector 2, Noida (UP) 201301

CONTACT / WEBSITE

Tel: +91 120 4277 730

www.absolutearchitecture.net

**NORTH WEST ELEVATION****LEGEND**

1. ENTRANCE COURT
2. ENTRY VESTIBULE
3. VERANDAH
4. BEDROOM
5. TOILET
6. POWDER ROOM
7. ENTRANCE COURT
8. FOYER
9. LOUNGE
10. FORMAL LIVING ROOM
11. DINING ROOM
12. PANTRY
13. KITCHEN
14. UTILITY ROOM
15. DRIVEWAY
16. GARDEN

LOWER LEVEL PLAN**PRODUCTS / VENDORS**ACP / Glass / Concrete: *Asahi Glass*Sanitary ware / Fittings: *Jacob Delafon with Grohe Tapware, CP fittings*Flooring: *Marbles and Wooden Laminate, Sharper Image*Furnishing: *Mac*Air Conditioning: *Hitachi, LG*Lighting: *Phillips, Halonix, Various*Paint: *Asian Paints***CONSULTANTS / CONTRACTORS**Structural: *Deo-Engineering Consultants*Mechanical, Plumbing: *PDS Consultants*Electrical: *Anand Consultants*Landscape: *Vinod Sood*HVAC: *KV Saigal*

The family room connects all the private living quarters with each other as well as the rest of the house via the staircase. The staircase leads to the pooja room and office on the upper level and the entrance foyer on the lower level.